

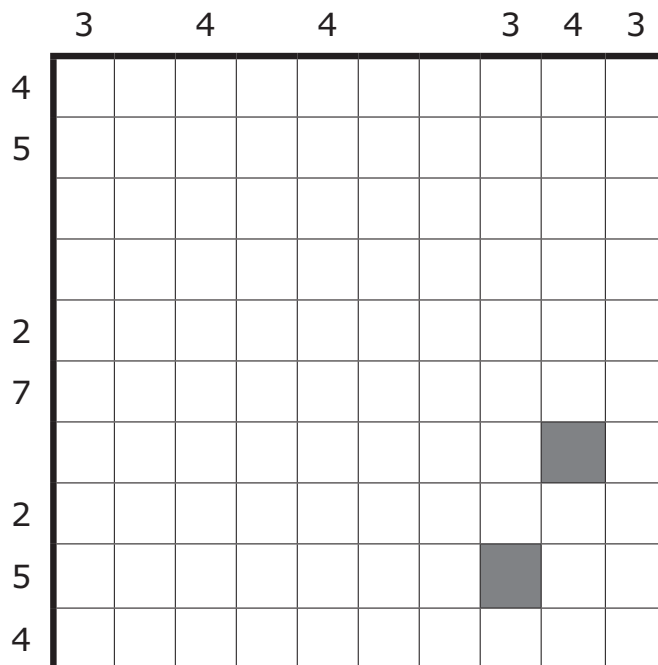
These are all the puzzles that have been published on [wcpn.nl](http://wcpn.nl) in July 2018, including solutions, puzzle designers and difficulty level.



### SLANG

02072018 - RS - 2\* - 1968

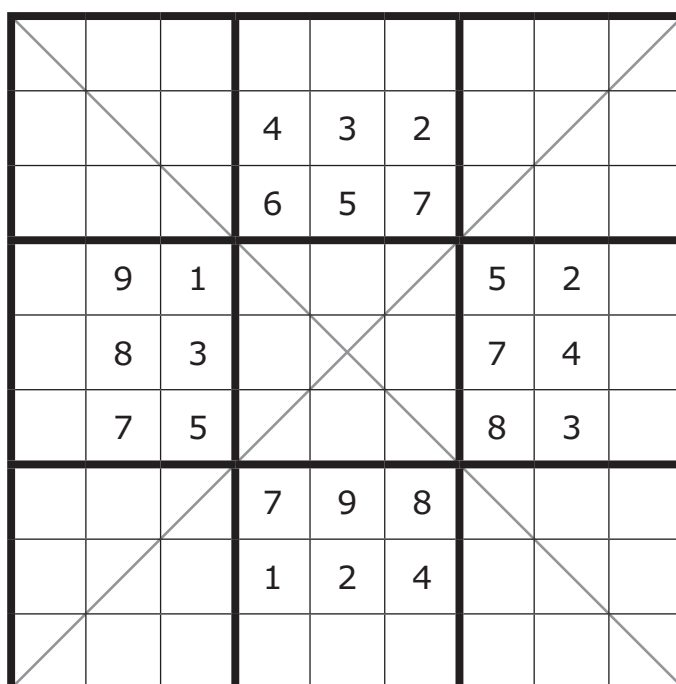
In het diagram zit een slang verborgen die begint en eindigt bij de grijze vakjes. De slang kronkelt horizontaal en verticaal en raakt zichzelf nergens, ook niet diagonaal. De cijfers buiten het diagram geven aan hoeveel delen van de slang zich in de betreffende rij of kolom bevinden.



### SUDOKU - diagonal

03072018 - AB - 3\* - 1969

Place the digits 1-9 in each column, each row, in all nine 3x3 regions and on the two main diagonals.



Puzzle is designed for:  
Polish Sudoku Championship 2018



### JAPANESE SQUARE PLUS

04072018 - RS - 3\* - 1970

Place digits 1–6 into each column and on each row exactly once. Numbers outside the grid indicate the sums of blocks of digits in that row or column. These sums are placed in increasing order, not necessarily in the order of the solution. Blocks have to be separated by at least one empty cell.

	3	7							1
	8	7	6		6	5	5	4	
	10	7	15	21	15	16	15	17	

7	7	7							
	10	11							
2	6	13							
6	6	9							
	21			3					
	21		6						
3	3	15							
	9	12							

### NURIKABE

05072018 - WZ - 4\* - 1971

Shade some empty cells black so that the grid is divided into white areas, each containing exactly one number and with an area in cells equal to the value of that number. Two white areas may only touch diagonally. All black cells must be connected with each other, but no 2x2 square of cells can be entirely shaded black.

1									1
								5	
	7						5		
		2							
					4				
				4					3
							3		
		13			3				
	7					8			



ABC aka alphacipher

06072018 - RS - 5\* - 1972

Every letter of the alphabet has a different value from 1 to 26. The numbers behind the words are the sum of the letters of that word.

BUFFALO BILL	?, 22
CENTRAL PARK	78, ?
DEATH VALLEY	80, 60
GRIZZLY	66
JOSHUA TREE	70, 40
LAS VEGAS	11, 44
ROBERT NIXON	67, 53
SEQUOIA	58
THE WHITE HOUSE	46, ?, 43
WALK OF FAME	38, 25, 41
WALL STREET	22, 67

<b>A</b>	<b>B</b>	<b>C</b>	<b>D</b>	<b>E</b>	
<b>F</b>	<b>G</b>	<b>H</b>	<b>I</b>	<b>J</b>	
<b>K</b>	<b>L</b>	<b>M</b>	<b>N</b>	<b>O</b>	
<b>P</b>	<b>Q</b>	<b>R</b>	<b>S</b>	<b>T</b>	
<b>U</b>	<b>V</b>	<b>W</b>	<b>X</b>	<b>Y</b>	<b>Z</b>

SUDOKU - no touch

09072018 - AB - 3\* - 1973

Place the digits 1-9 in each column, each row and in all nine 3x3 regions. Equal digits do not touch diagonally.

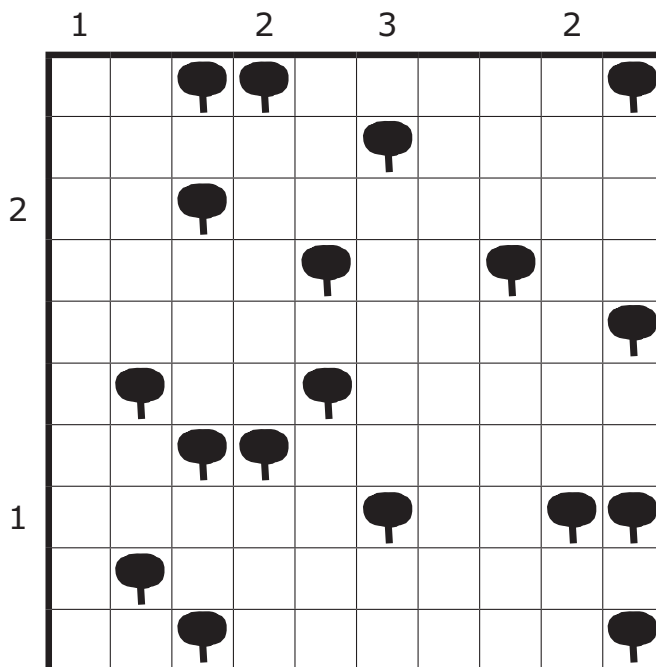
			3		5			
	8		2		4		3	
2	7		6		3		1	5
8	5		7		2		9	6
	3		4		7		8	
			5		1			

Puzzle is designed for:  
Polish Sudoku Championship 2018

TENTS aka CAMPING

10072018 - RS - 2\* - 1974

Attach a tent to each tree, in a horizontally or vertically adjacent cell. Cells with tents do not touch each other, not even diagonally. Numbers outside the grid indicate the number of tents in that row or column.



DOMINO CLASSIC

11072018 - WZ - 3\* - 1975

A complete set of dominoes must be placed in the grid. The ends of adjacent stones have the same value.

- 00
- 01 11
- 02 12 22
- 03 13 23 33
- 04 14 24 34 44
- 05 15 25 35 45 55
- 06 16 26 36 46 56 66

5	5	3	4	6	6	1	2
0	0	0	4	5	6	3	5
1	6	3	2	2	0	3	5
1	4	2	2	2	2	1	5
1	3	4	5	6	6	1	0
1	3	3	0	6	4	1	0
2	5	4	4	4	6	3	0

### SUDOKU - ARROWS

12072018 - RS - 4\* - 1976

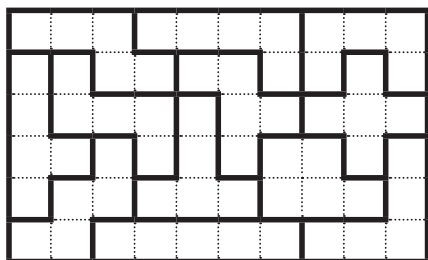
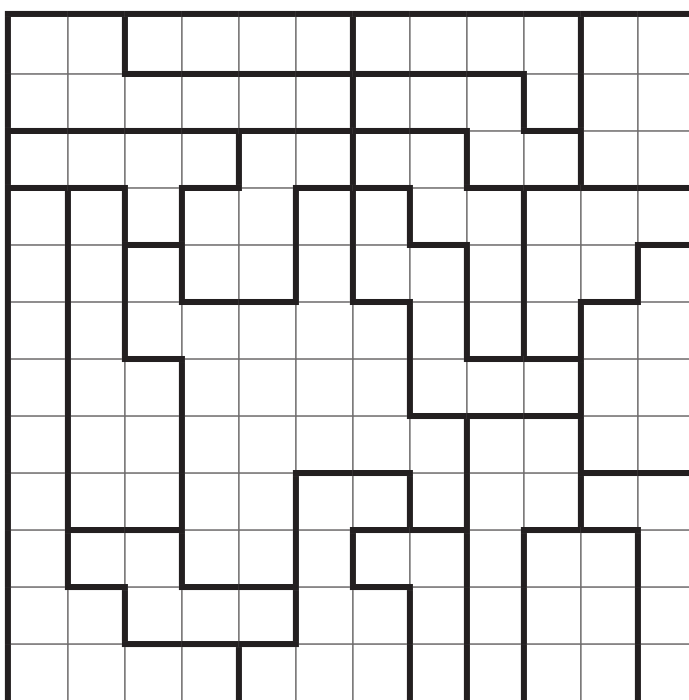
Place the digits 1-9 in each column, each row and in all nine 3x3 regions. The digits in the arrow points are the sum of the digits in the arrow. Equal numbers in an arrow are allowed.

	3	4					2	
9								5
5			4			9		
		1						
					7			
		5						2
1								9
	6					3	8	

### PENTOMINO IN THE BOX

13072018 - RS - 5\* - 1977

Place all twelve different pentominoes in the grid, in such a way that they do not touch each other, not even diagonally. The pentominoes may be rotated and/or mirrored. Every bold outlined area contains exactly three cells that belong to two different pentominoes.

TAPA

16072018 - RS - 3\* - 1978

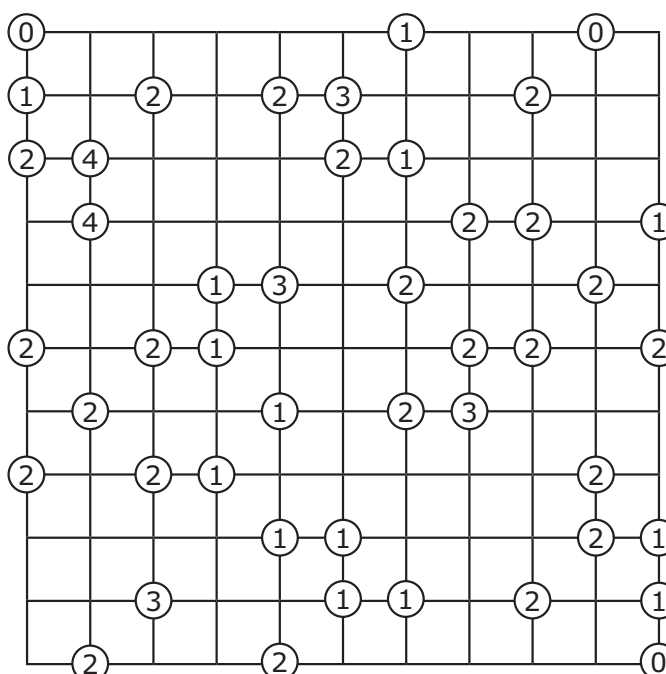
Grid cells must be filled in so that all the black cells form one contiguous region, not counting squares touching at a corner to be adjacent, but it is not allowed to have a two by two square of black cells. Clue cells with numbers may not be filled in and tell the length of each consecutive black cell block in the eight surrounding cells. Two cell blocks clued by two different numbers must be separated by at least one white cell.

				13				
	22							13
				23				
3						15		11
	122		24					2
						3		
	15							3
						11		

CREEK

17072018 - RS - 3\* - 1979

The digits in the circles indicate how many of the adjacent cells must be coloured. All remaining white cells are connected horizontally or vertically.



SUDOKU - anti-knight

18072018 - AB - 4\* - 1980

Place the digits 1-9 in each column, each row and in all nine 3x3 regions. No cell that is a knight-step (chess) away will contain the same digit.

		6				4		
		3				7		
4	9	7				8	5	3
8	2	4				5	6	1
		9				2		
		5				9		

Puzzle is designed for:  
Polish Sudoku Championship 2018

MAGNETS

19072018 - HvR - 4\* - 1981

Place magnets into some of the regions so that each magnet has a positive and a negative pole. Cells containing magnet halves of the same polarity cannot share an edge. Numbers outside the grid indicate the number of positive and negative poles in the rows and columns.

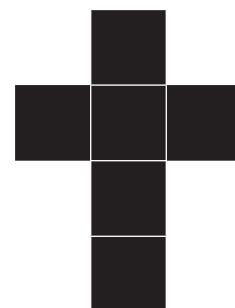
+		2	3	2	1	3	4	2	2	1	
-			2	1	2	3	2	1	4	2	2
1											
1	3										
3	3										
2	2										
2	4										
1	1										
2	1										
2	3										
4	2										
2											

CITY CONSTRUCTION - spiral

20072018 - RS - 5\* - 1982

Place all buildings in the grid. Buildings may be rotated. They may not touch each other, not even diagonally. Draw a closed loop that passes through all the remaining white cells. The loop does not cross or overlap itself. The given grid is a spiral. Building segments are numbered from 1 to n, starting from the entrance of the spiral (top left) and moving towards the center. The numbers outside the grid represent the sum of the building segments in the corresponding row or column.

1x church



2x factory



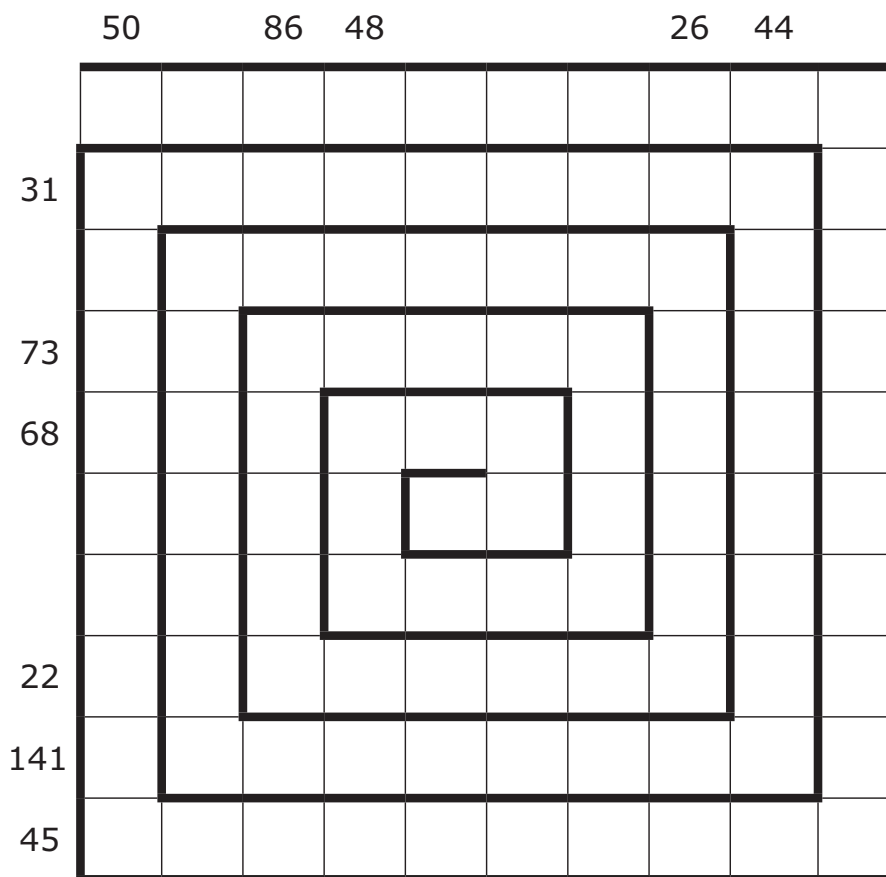
1x park



5x flat



3x house

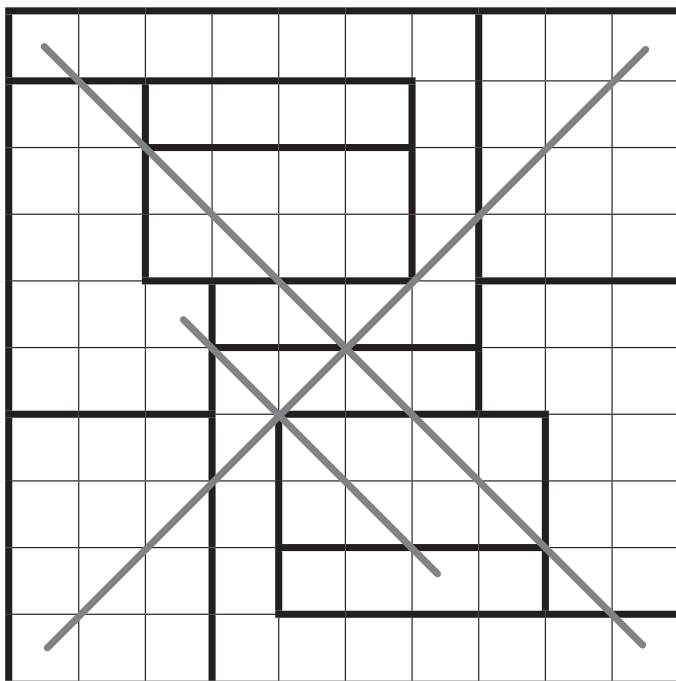




STAR WARS

23072018 - AB - 3\* - 1983

Place two stars with the size of one cell in each row, column, outlined region and on each grey line. The stars do not touch each other, not even diagonally.



SUDOKU - compressed

24072018 - RS - 3\* - 1984

Fill the grid with digits 1 to 9. No digit is repeated within a row, a column, the four grey 3x3 blocks and the five outlined 3x3 blocks.

9		4		1		3
		3		2		
	2				6	
3						8
	8				1	
		5		9		

Puzzle is designed for:  
Polish Sudoku Championship 2018



SLOVAK SUMS

25072018 - WZ - 3\* - 1985

Place the digits 1-6 in each column, each row and in all nine 3x3 regions so that each digit appears exactly once in each row and column. Cells may remain empty. A cell cannot contain more than one digit. Some clues are given in the grid; digits should not be placed in cells with clues. Each clue indicates the sum of the digits next to the clue. The small digit indicates the number of adjacent cells with a digit.

	9 2					5 2		
		8 3				9 3		
				12 3				
8 2				8 2				6 2
				6 3				
		12 3				17 3		
	4 2		5	2	6		6 2	

INFECTION

27072018 - BdL - 4\* - 1987

Place digits from 1 to 4 into some empty cells. All cells with digits must be orthogonally connected. A digit in a cell indicates how many orthogonally cells contain a digit. Same digits cannot share an edge.

		1				1		
					2			2
		2					1	
	1				4			
					3			
		1				3		
				3				
								1
	2		1			2		



KAKURO (aka Swedish Arithmetic Riddle)

26072018 - HNS - 4\* - 1986

For each number the sum is equal to the number in the grey box. A number above a diagonal relates to the digits you need to fill in to the right. A number below a diagonal relates to the digits you need to fill in vertically below it. Enter digits 1-9 so that no digit repeats in any of the numbers.

	3	10			8	3			
3				3					
			10	17				19	12
30							16		
							20		
		3				19			
				26					
		18				12			
	28	27				10			
15			13					14	20
17				19					
			11						
21				3			17		
				4			13		
21							14		
			6						
							5		



LOOPY

30072018 - AB - 2\* - 1988

The grid contains the numbers 1 to 32 each twice. Draw a continuous loop that does not intersect or overlap and contains all numbers exactly once. The loop only travels horizontally and vertically.

22	5	17	15	29	25	25	32
4	11	30	10	16	8	14	21
32	7	24	19	31	1	9	17
27	6	26	2	14	3	28	20
3	23	9	16	19	10	12	6
11	20	12	27	7	23	18	22
8	30	29	31	2	15	1	26
13	18	13	5	28	24	21	4

SUDOKU - x-sums

31072018 - RS - 3\* - 1989

Place the digits 1-9 in each column, each row and in all 3x3 regions. Numbers outside the grid indicate the sum of the first X digits in the corresponding direction. X is the first digit in the corresponding direction.

	18	26		6	31		8	
17								
33								3
9								43
39								24
								18
	17			26	9		19	35

Puzzle is designed for:  
Polish Sudoku Championship 2018



02072018 - RS - 2\* - 1968

	3	4	4		3	4	3
4							
5							
2							
7							
2							
5							
4							

03072018 - AB - 3\* - 1969

5	3	4	9	8	1	2	6	7
7	6	8	4	3	2	1	9	5
9	1	2	6	5	7	4	8	3
4	9	1	8	7	3	5	2	6
2	8	3	5	1	6	7	4	9
6	7	5	2	4	9	8	3	1
1	4	6	7	9	8	3	5	2
3	5	9	1	2	4	6	7	8
8	2	7	3	6	5	9	1	4

04072018 - RS - 3\* - 1970

		3	7				1		
		8	7	6		6	5	5	4
		10	7	15	21	15	16	15	17
7	7	7	3	4	1	6	2	5	
10	11		3	5	2	1	6	4	
2	6	13	2	1	5	4	3	6	
6	6	9	5	1	6	3	4	2	
	21		1	6	2	3	4	5	
	21		6	4	2	3	5	1	
3	3	15	6	5	4	1	2	3	
9	12		4	2	3	5	6	1	

05072018 - WZ - 4\* - 1971

1							1
						5	
	7					5	
		2					
				4			
				4			3
						3	
			13		3		
	7					8	

06072018 - RS - 5\* - 1972

<b>A</b>	<b>B</b>	<b>C</b>	<b>D</b>	<b>E</b>
8	16	13	26	3
<b>F</b>	<b>G</b>	<b>H</b>	<b>I</b>	<b>J</b>
20	7	18	4	22
<b>K</b>	<b>L</b>	<b>M</b>	<b>N</b>	<b>O</b>
17	1	10	19	5
<b>P</b>	<b>Q</b>	<b>R</b>	<b>S</b>	<b>T</b>
14	21	9	2	25
<b>U</b>	<b>V</b>	<b>W</b>	<b>X</b>	<b>Y</b>
15	24	12	6	23
				<b>Z</b>
				11

09072018 - AB - 3\* - 1973

1	2	7	3	9	5	6	4	8
6	8	5	2	7	4	1	3	9
9	4	3	1	8	6	5	7	2
2	7	9	6	4	3	8	1	5
3	6	1	8	5	9	7	2	4
8	5	4	7	1	2	3	9	6
7	1	2	9	6	8	4	5	3
5	3	6	4	2	7	9	8	1
4	9	8	5	3	1	2	6	7

10072018 - RS - 2\* - 1974

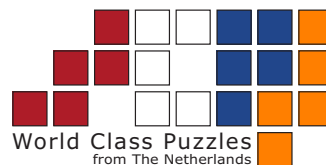
	1	2	3	2			
	△	●	●	△		△	●
2	△	●		△			
	△		●		●	△	●
	△	●	●	△			△
1	△	●		●	△	●	●
	△	●		△			△

11072018 - WZ - 3\* - 1975

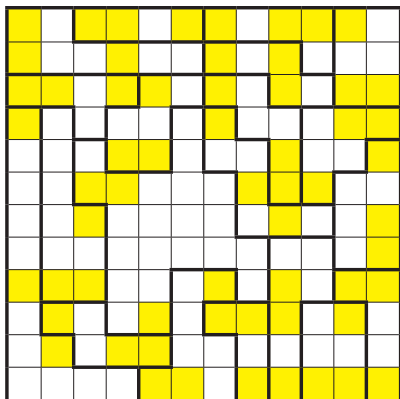
5	5	3	4	6	6	1	2
0	0	0	4	5	6	3	5
1	6	3	2	2	0	3	5
1	4	2	2	2	2	1	5
1	3	4	5	6	6	1	0
1	3	3	0	6	4	1	0
2	5	4	4	4	6	3	0

12072018 - RS - 4\* - 1976

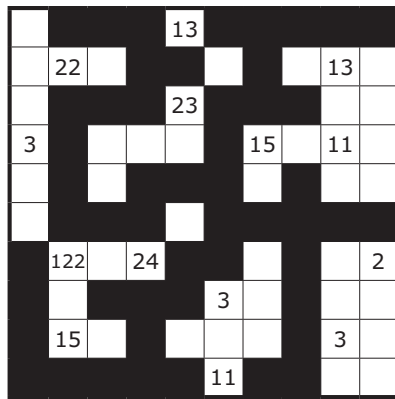
7	3	4	9	6	5	1	2	8
9	1	6	2	3	8	7	4	5
5	2	8	4	7	1	9	3	6
8	5	1	3	4	9	2	6	7
3	7	9	6	5	2	8	1	4
6	4	2	8	1	7	5	9	3
4	9	5	1	8	3	6	7	2
1	8	3	7	2	6	4	5	9
2	6	7	5	9	4	3	8	1



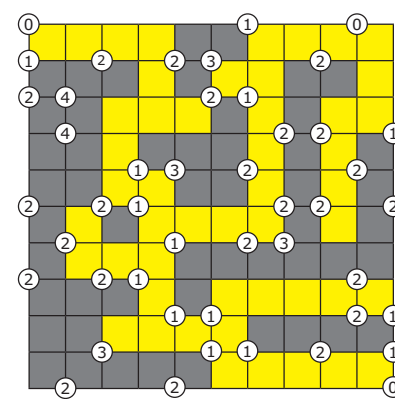
13072018 - RS - 5\* - 1977



16072018 - RS - 3\* - 1978



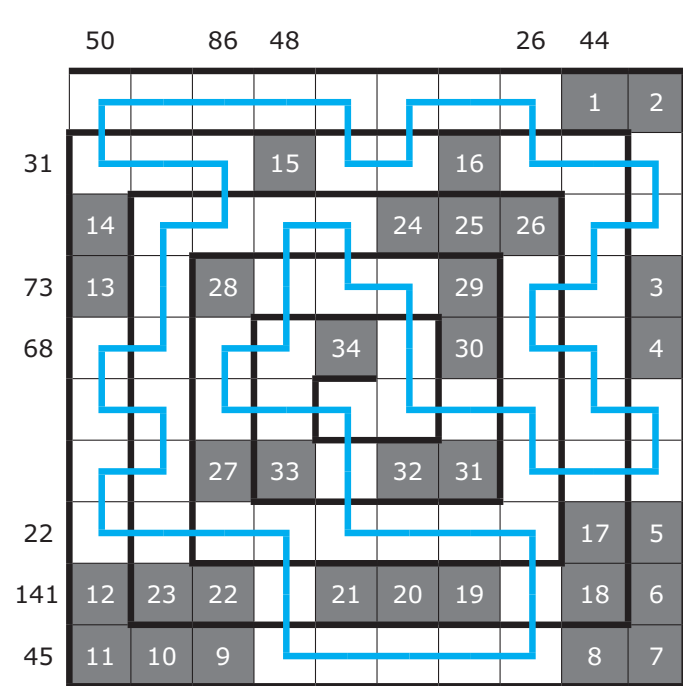
17072018 - RS - 3\* - 1979



18072018 - AB - 4\* - 1980

5	8	6	3	9	7	4	1	2
2	1	3	4	5	8	7	9	6
4	9	7	2	1	6	8	5	3
9	4	2	7	3	1	6	8	5
3	5	8	6	4	9	1	2	7
6	7	1	8	2	5	3	4	9
8	2	4	9	7	3	5	6	1
1	3	9	5	6	4	2	7	8
7	6	5	1	8	2	9	3	4

20072018 - RS - 5\* - 1982

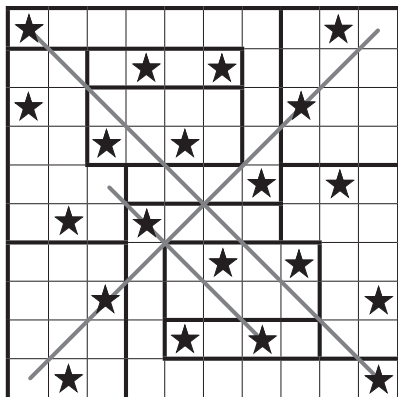


19072018 - HvR - 4\* - 1981

+	2	3	2	1	3	4	2	2	1			
-		2	1	2	3	2	1	4	2	2		
1	+	-	+			+		+				
1	3	-				+	-	-				
3	3	+				-	+	-		-	+	
2	2	-	+			+	-					
2	4		-			-	+		-	+	-	
1	1					-					+	
2	1					+			+	-		
2	3	-	+			-	+				-	
4	2					+		-	+		-	+
2		-	+	-				+	-			



23072018 - AB - 3\* - 1983



24072018 - RS - 3\* - 1984

9	7	4	6	1	8	3
6	5	3	7	2	4	9
1	2	8	9	5	6	7
5	4	7	2	3	9	1
3	9	6	1	4	2	8
4	8	2	3	7	1	5
7	1	5	8	9	3	6

25072018 - WZ - 3\* - 1985

	9 <sub>2</sub>	5	2	6	3	1	5 <sub>2</sub>	4
1	4	2		5		3		6
6	3	8 <sub>3</sub>		4	1	9 <sub>3</sub>	5	2
	1	3	6	12 <sub>3</sub>	2		4	5
8 <sub>2</sub>	6	4	3	8 <sub>2</sub>	5	2	1	6 <sub>2</sub>
2	5		1	6 <sub>3</sub>	4	6	3	
5	2	12 <sub>3</sub>	4	1		17 <sub>3</sub>	6	3
4		6		3		5	2	1
3	4 <sub>2</sub>	1	5	2	6	4	6 <sub>2</sub>	

26072018 - HNS - 4\* - 1986

	3	10			8	3				
3	2	1	10	17	3	2	1	19	12	
30	1	9	7	5	6	2	16	7	9	
		3	2	1	26	19	7	9	3	
	28	27	18	1	9	8	10	12	9	3
15	7	8	13	2	1	7	3	14	20	
17	8	9	11	19	5	2	1	3	8	
21	9	4	8	3	2	1	17	8	9	
21	4	6	1	3	7	14	9	2	3	
		6	2	1	3	5	4	1		

27072018 - BdL - 4\* - 1987

1		1			2	3	1		1
3	2	3		2	4	2			2
2		2	3	4	3			1	3
3	1		2	3	4	2			2
2				2	3				3
3	1			1		2			2
2		1	3	4	2	4	3	2	3
3	2		2	3		3	2		2
2	4	2		1		2			1
	2	3	1		1	3	2	1	

30072018 - AB - 2\* - 1988

22	5	17	15	29	25	25	32
4	11	30	10	16	8	14	21
32	7	24	19	31	1	9	17
27	6	26	2	14	3	28	20
3	23	9	16	19	10	12	6
11	20	12	27	7	23	18	22
8	30	29	31	2	15	1	26
13	18	13	5	28	24	21	4

31072018 - RS - 3\* - 1989

	18	26		6	31			8		
17	4	5	6	2	7	1	8	9	3	
	7	9	8	4	3	5	2	6	1	
	1	2	3	8	9	6	5	7	4	
33	6	3	5	7	4	8	9	1	2	3
9	2	7	1	6	5	9	4	3	8	43
39	8	4	9	1	2	3	7	5	6	24
	9	6	2	5	1	4	3	8	7	
	5	1	4	3	8	7	6	2	9	
	3	8	7	9	6	2	1	4	5	18
	17			26	9		19	35		

**puzzle authors**

- AB Arvid Baars
- BdL Bram de Laat
- HNS Hns Eendebak
- HvR Hugo van Rooijen
- RS Richard Stolk
- WZ Wilbert Zwart

**puzzle names**

date (ddmmyyyy) - author - difficulty level - wcpn puzzle ID



[www.wcpn.nl](http://www.wcpn.nl)



[info@wcpn.nl](mailto:info@wcpn.nl)